

## LEADING THE WAY IN COMMUNITY AGED CARE

### So why choose Anglicare?

Anglicare Tasmania is your local, not-for-profit service provider.

Anglicare provides a range of community supports to assist you to remain independent and connected to the community in which you live. We are an approved provider for all levels of government funded services so when your support needs change you can receive additional services and have them delivered by the team you know and trust.

#### About Anglicare

Anglicare is a Not-For-Profit organisation



What type of organisation are you, Not-For-Profit or for Profit?

Anglicare has a state-wide workforce so even if you move location you can stay with Anglicare



Do you operate state-wide?

When you call us on our free call number you are speaking to a person in Tasmania



If I call your organisation who responds and where are they based?

Anglicare can provide additional services such as Pastoral Care, Mental Health, Financial Counselling, Housing and Homelessness and Drug and Alcohol services for you or someone you care about



What additional services can your organisation provide?

#### About our Case Managers

Case Managers are clinically trained to monitor your health in the comfort of your own home



What qualifications do your case managers hold?

Our Clinical Case Managers can provide support and train your team in simple wound care, continence care, special diets, and use of aids and equipment



If I need specialised care such as wound dressing do you have clinical staff to do this?

Our Clinical Case Managers can assess for the dementia supplement in the comfort of your own home



Do you have staff qualified to do a dementia assessment?

Our Clinical Case Managers support end of life care



Can you provide this service in your organisation?

Our Clinical Case Managers will arrange brokerage agreements with other providers if a consumer requests



Does your organisation broker staff from other providers?

#### About our Support Staff

Your support team have a minimum of a Certificate III in Community Care



Are **ALL** your support staff qualified?

Your support team are endorsed to assist you with medication



Are your staff qualified to help with my medication?

Your support team will be in a smart uniform and will show you their photo ID



How are your staff identified?

#### Questions to ask other providers

### About our Fees and Charges

We charge only \$23.03 per week for your Basic Daily Fee



Your Basic Daily Fee amount goes back into your budget to buy you more services



Our Administrative costs are 15% for a Level 1 & 2 and 20% for a Level 3 & 4



We provide a range of case management options. You choose the level you require



We charge **NO** exit fee



### Questions to ask other providers

How much do you charge me for the Basic Daily Fee?

How do you account for the Basic Daily Fee?

What are your Administration costs?

Are your case management costs fixed and how much comes out of my budget for this service?

Do you charge a fee if I decide to leave your service and if so how much is this amount?

## Why Choose Anglicare



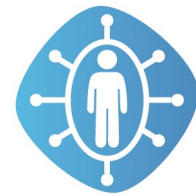
### Experience you can trust

We've been a trusted not-for-profit provider of support to Tasmanians for over 30 years



### Great people, responsive service

Anglicare's friendly team includes over 800 people across Tasmania with a diverse range of skills, expertise, experience and qualifications



### Personalised for you

We have one of the broadest ranges of services of any Tasmanian provider. We use a responsive approach to deliver the right services to meet your needs



### Great value

As a well established not-for-profit provider, we have efficiency to deliver value for money to make your funding go further



### Local knowledge, partnership approach

We're a major employer with strong community connections across Tasmania, by supporting us you support your local community



### Reliable quality services

We meet stringent standards for reliability and quality. This means you can trust that our services are reliable and best practice

## Get in touch today

If you would like further information or to discuss receiving care and support from our friendly, caring team of professionals, please call **1800 466 300** today.